

# 953/963

## TRACK LOADERS



**Nominal Net Power**  
ISO 9249/SAE J1349  
ISO 9249/SAE J1349 (DIN)  
**Operating Weight**

**953**  
1,800 rpm  
119 kW (160 hp)  
162 mhp  
15 958 kg (35,181 lb)

**963**  
1,800 rpm  
151 kW (202 hp)  
204 mhp  
20 358 kg (44,881 lb)

Cat® C7.1 engine meets U.S. EPA Tier 4 Final/EU Stage V/Japan 2014/Korea Tier 4 Final emission standards.



# CAT<sup>®</sup> 953 AND 963 TRACK LOADERS

## ULTIMATE VERSATILITY

Save money and transport time with one rugged machine that does it all – land clearing, digging, grading, truck loading, slope work and more. Crawler loaders give you lower ground pressure and better traction so you can start the job sooner, and work longer, in all kinds of underfoot conditions. Cat Track Loaders give you all this, plus outstanding performance and fuel efficiency.



### THE MOST VERSATILE MACHINE ON THE JOBSITE

Your track loader can be the first machine on the job and the last to leave – no other single machine can do as many different tasks as a crawler loader. Traction and flotation mean you can work when and where others cannot, such as in wet, soft or rocky conditions. And when your job has special requirements, there is a purpose-built track loader that's up to the challenge:

- + LOW GROUND PRESSURE
- + WASTE HANDLER
- + SHIP HOLD
- + STEEL MILL




---

## ONE MACHINE, MANY JOBS

Transport, operate and maintain just one machine to dig, load, carry, fill and more. The Fusion™ quick coupler adds versatility with fast attachment changes.

---

## UP TO 10% FUEL SAVINGS

A more efficient engine, along with Automatic, Eco and Power modes, help you match performance to the job and optimize fuel efficiency. Remote services and machine features help you save time and money on your service and maintenance.

---

## MORE PRODUCTIVITY

Boost your productivity up to 20% with an optional Performance Series bucket.



## FAST START

Remove trees, pick up debris, load it up to be carried away. Use the optional ripper to prepare hard ground. Excavate material, remove topsoil, stockpile. Track loaders give you the traction you need to work on uneven ground and poor underfoot conditions.

## STEADY PACE

Dig foundations, load trucks, grade material and carry it away. Quickly move pipe and other materials around the jobsite. Backfill trenches and around foundations. Build and finish slopes up to 45°.

## STRONG FINISH

When the job is done and all the other machines head home, your track loader can stick around to clean up rock, debris and dirt. You can even use it on finishing touches like building ponds and retaining walls or installing hardscape.

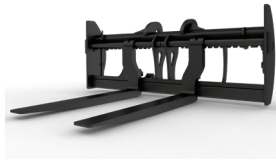


ADDED VERSATILITY

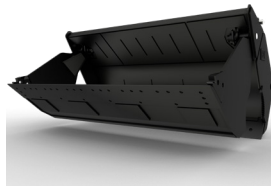
# QUICK CHANGE ARTIST



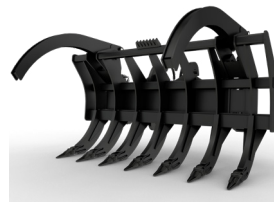
FUSION QUICK COUPLER



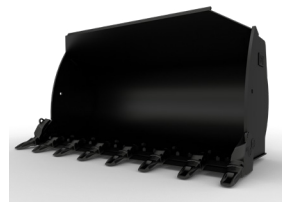
PALLET FORKS



MULTI-PURPOSE BUCKET



RAKE



GENERAL PURPOSE BUCKET

## QUICK ATTACHMENT CHANGES

Fusion Quick Coupler option lets you make fast attachment changes with a wide range of tools like forks, buckets, etc. from wheel loaders and other Fusion-compatible machines. Ask your Cat dealer about the range of tools available for the work you do.



## SMOOTH OPERATOR

Smoother response gives you more precise control of the machine and implements. This makes overall operation easier and lets you take on detailed tasks.



## SAVE FUEL, SAVE MONEY

Auto mode matches performance to the job so you get the engine power you need but use less fuel when doing lighter work. Save up to 10% on fuel compared to the K Series and up to 25% compared to the D Series. Eco mode provides added fuel savings in lighter-duty applications. Power mode delivers full power at all times so you can feel ready to take on the toughest applications.



## TOP PERFORMER

The efficient Cat C7.1 engine delivers power and fast response when the machine is under load.



## BOOST YOUR PRODUCTIVITY

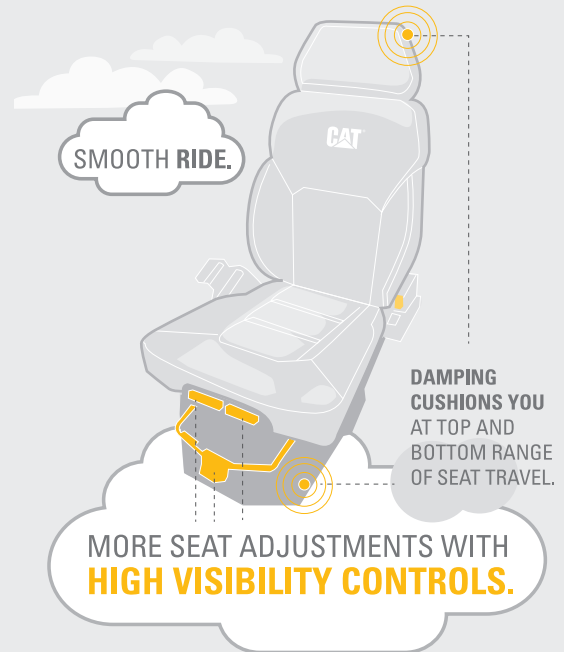
Get more work done in less time with the Performance Series bucket, designed to increase your productivity by up to 20% compared to a General Purpose bucket.

Updated cab offers added comforts and more storage. Reduced engine noise makes the environment quieter for the operator and others around the worksite.

Next-generation seat gives you a more comfortable ride and has dynamic end dampers to cushion you at the top and bottom range of seat travel. Enjoy more adjustment features, 4-point restraint compatibility and heated or heated/cooled options.

- Intuitive 10-inch (254 mm) touchscreen dash display.
- Standard high-definition rearview camera shows prominently in the main display.
- More heating/cooling airflow in the cab means greater comfort.
- Added lighting packages illuminate your work area.

## EASY CHAIR



**TOUGH ON THE JOB**  
**EASIER ON OPERATORS**



## HELPING HANDS FOR EASE OF OPERATION

### TAKE CONTROL

---

Select joystick or V-lever and pedal steering for transmission controls and either joystick or 2-lever implement controls. Smooth implement and steering response, plus improved steering performance, provide easy, precise operation. Set your implement response – fine, normal, coarse – to match preference or application.

### EASIER TRUCK LOADING

---

Preset your repetitive lift, lower, rack, dump and float functions to make jobs like truck loading easier. Set each function separately with the simple push of a button in the cab.

### SIMPLIFY SLOPE WORK

---

Slope Indicate shows machine mainfall and cross slope right on the display, without added hardware or software. Slope Indicate does not control the attachment, but it does provide a useful reference when doing jobs like cutting drainage, working on road embankments or grading on slopes.

### LINE OF SIGHT

---

Cat buckets are designed with a ridge along the back that is parallel to the bucket floor and cutting edge. Use it as a simple tool to help calculate angles for jobs like drainage and grading.

LESS MAINTENANCE TIME

# MORE TIME ON THE JOB

## EASY ACCESS

The cab tilts 30° and locks in place with a bar, giving you convenient access for maintenance and repairs. Optional extended service package adds a manual hydraulic pump so you can easily tilt the cab in the field without a crane.

## WHEN UPTIME COUNTS

Cat track loaders are designed to help you take care of routine maintenance and get back to work.

- + Grouped service points located behind large access doors; daily grease points in easy reach at ground level.
- + Easy ground-level access to battery disconnect, underhood light switch, access lighting and a new main switch.
- + New engine air filter is easier to service.
- + New air cleaner is easier to service and captures more debris for improved engine reliability.
- + Implement Return oil filter helps protect system from contamination.
- + Handy bracket holds a shovel for quick undercarriage clean-out.
- + Diesel Particulate Filter in the Clean Emissions Module designed to work for the life of the engine without needing to clean or replace the filter.

## COOL AND CONVENIENT

Hydraulic demand fan reduces speed in cooler conditions to conserve power, save fuel and decrease sound levels. It's designed to reduce plugging, and fold-down access provides easy clean-out. Optional reversing fan is available for high debris conditions.



# CAT LINK TECHNOLOGY

## TAKES THE GUESSWORK OUT OF MANAGING YOUR EQUIPMENT

**Cat Link** telematics technology helps take the complexity out of managing your jobsites by gathering data generated by your equipment, materials and people serving it up to you in customizable formats.

### **CAT PRODUCT LINK™**

Product Link collects data automatically and accurately from your assets – any type and any brand. Information such as location, hours, fuel usage, productivity, idle time, maintenance alerts, diagnostic codes and machine health can be viewed online through web and mobile applications.



### **VISIONLINK®**

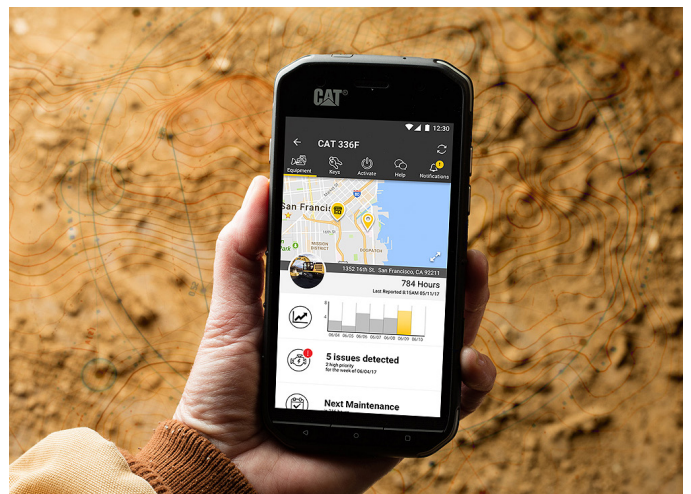
Access information anytime, anywhere with VisionLink – and use it to make informed decisions that boost productivity, lower costs, simplify maintenance and improve safety and security on your jobsite. With different subscription level options, your Cat dealer can help you configure exactly what you need to connect your fleet and manage your business, without paying for extras you don't want. Subscriptions are available with cellular or satellite reporting or both.



### **REMOTE SERVICES**

The Cat App helps you manage your assets – at any time – right from your smartphone. See fleet location and hours, get critical required maintenance alerts and even request service from your local Cat dealer.

- + **Remote Flash** – get software updates to one or more machines remotely. You just need a designated person close to the machine to initiate/confirm the update.
- + **Operator ID** lets you track machine operation by individual operator using the main display and Product Link.



# WORK MORE SAFELY

## LOOKING OUT FOR YOU

Cat track loaders are designed to help operators work more safely. Ergonomics, a quiet engine and low-effort controls help lessen fatigue so operators are better able to remain fresh and focused.



### BETTER VIEW

Standard rear-vision camera, located right in the main dash display, makes it easier to see people or obstacles behind the machine.

### BUCKLE UP

Seat belt indicator gives an alarm and registers fault code through Product Link if the operator fails to buckle up, enhancing jobsite safety.

### BRIGHTER LIGHT

Illuminate your worksite with LED lighting and optional beacons. Added lights at the bottom of the cab shine on the track, and fender LED lights help light up the work area in low light conditions.

### EASY TRANSPORT

Added machine tie downs at the front and rear of the machine give you a safe way to secure the machine during shipment. Please refer to the Operating and Maintenance Manual for details.



### ON AND OFF WITH EASE

Cat track loaders are designed with operator safety in mind. Grab handles and steps are located at both the front and back of the machine so you can climb on and off more easily.

# PURPOSE-BUILT TO TAKE ON THE TRASH

Take on a variety of tasks in a landfill or transfer station. Push, shred and compact waste. Create and maintain access, dig cells and work cover material.



## HEAVY-DUTY WASTE HANDLER

Factory-equipped guarding and seals help protect the machine, undercarriage and cooling system from impact and airborne debris. Choice of buckets and track shoes allow you to further optimize the machine for greater performance and service life.

## CLEANOUT AND COMPACTION

Wide gauge undercarriage and standard width track helps reduce debris buildup for easier cleaning. Added weight, plus narrower track shoe, increases ground pressure for greater compaction.

## GO TO EXTREMES

For tougher tasks like demolition and transfer stations, choose an Extreme Service package with even more guarding and screens to help protect the windshield and operator from breakage and debris.

# CAPABLE SPECIALISTS

## EQUIPPED FOR YOUR JOB

---

Track loaders are second to none when it comes to versatility, agility and the ability to work in tight spaces. And when the job has specific demands, you can equip your loader from the factory to take on the challenge.

### LOW GROUND PRESSURE

When you need even more flotation and traction, or are working in more sensitive ground conditions, choose a Low Ground Pressure (LGP) loader. The wider tracks provide added ground contact area, giving you lower ground pressure and better flotation. The wider tracks also add to machine stability for slope work.



---

### SHIP SHAPE

Traction, high reach and machine balance make track loaders ideal for working in ship holds and port handling duties. Work with ease in tight spaces and on uneven ground. Specialized guarding and seals help protect the machine, while attachments like coal buckets and trim blades help you get the job done.



---

### HOT SPOTS

Your track loader can be factory equipped with a heat-resistant cab, high-temperature guarding and other features to help protect the machine and operator in high-temperature steel mill work.

*Important Notice: This package DOES NOT feature all the other modifications required to allow the machine to run on hot slag. Please consult with your Cat dealer for details.*



# TECHNICAL SPECIFICATIONS

For complete specifications, dimensions and configurations, please refer to the Technical Specifications for each model available at dealer.cat.com.

	953		963	
<b>Engine Model</b>	Cat C7.1			
Emissions	U.S. EPA Tier 4 Final/EU Stage V/ Japan 2014/Korea Tier 4 Final			
Build Number	12A			
Net Power (1,800 rpm) ISO 9249/SAEJ1349	119 kW	160 hp	151 kW	202 hp
Net Power (1,800 rpm) ISO 9249/SAEJ1349 (DIN)	162 mhp		204 mhp	
Fuel Tank	265 L	70 gal	320 L	84.5 gal
DEF Tank	16 L	4.2 gal	16 L	4.2 gal
<b>Operating Weights</b>				
Standard	15 958 kg	35,181 lb	20 358 kg	44,881 lb
Low Ground Pressure (LGP)	17 261 kg	38,055 lb	22 762 kg	50,181 lb
<b>Overall Machine Width/Without Bucket</b>				
Standard Tracks	2316 mm	91.2 in	2400 mm	94.5 in
Narrow Tracks	2216 mm	87.2 in	2300 mm	90.5 in
LGP Tracks	2936 mm	115.6 in	2900 mm	114.2 in
Machine Height to Top of Cab	3156 mm	124.2 in	3325 mm	130.9 in
Overall Machine Length*	6378 mm	251.1 in	7001 mm	275.6 in
Hinge Pin Height at Maximum Lift	3608 mm	142.1 in	3940 mm	155.1 in
Turning Radius	3.6 m	141.7 in	4.0 m	157.5 in
Ground Pressure – Standard Shoe	66 kPa	10 psi	63 kPa	9.1 psi
Ground Pressure – LGP	43 kPa	6 psi	48.5 kPa	7 psi

\*General Purpose bucket and extra duty teeth

BUCKETS				
	Capacity		Width	
<b>953</b>				
General Purpose	1.8 m <sup>3</sup>	2.4 yd <sup>3</sup>	2485 mm	97.8 in
Performance Series	2.1 m <sup>3</sup>	2.7 yd <sup>3</sup>	2536 mm	99.8 in
General Purpose Fusion	1.8 m <sup>3</sup>	2.4 yd <sup>3</sup>	2536 mm	99.8 in
<b>963</b>				
General Purpose	2.5 m <sup>3</sup>	3.2 yd <sup>3</sup>	2571 mm	101.2 in
Performance Series	2.8 m <sup>3</sup>	3.7 yd <sup>3</sup>	2671 mm	105.2 in
General Purpose Fusion	2.5 m <sup>3</sup>	3.2 yd <sup>3</sup>	2571 mm	101.2 in

- The net power advertised is the power available at the flywheel when the engine is equipped with fan running up to maximum speed, alternator, air cleaner and aftertreatment.
- Advertised power is tested per the specified standard in effect at the time of manufacture.
- The air conditioning system on this machine contains the fluorinated greenhouse gas refrigerant R134a (Global Warming Potential = 1430). The system contains 1.1 kg of refrigerant which has a CO<sub>2</sub> equivalent of 1.573 metric tonnes.

# STANDARD & OPTIONAL EQUIPMENT

Standard and optional equipment may vary. Consult your Cat dealer for details.

POWER TRAIN	STANDARD	OPTIONAL
Cat C7.1 diesel engine	•	
Biodiesel compatible up to B20	•	
Load sensing implement pump	•	
Modular cooling system	•	
OPERATOR ENVIRONMENT	STANDARD	OPTIONAL
Pressurized, sound-suppressed, ROPS/FOPS cab with tinted glass and sliding window	•	
Special application cab with dual pane/polycarbonate window		•
Full-color 10-in. (254 mm) liquid crystal touchscreen display	•	
Integrated rearview HD camera	•	
Joystick or V-lever-and-pedal steering controls		•
Joystick or 2-lever implement controls		•
Comfort seat	•	
Premium seat		•
Deluxe seat		•
Adjustable armrests	•	
Radio ready	•	
Radio AM/FM Bluetooth®		•
Radio AM/FM/DAB+ Bluetooth		•
Radio AM/FM/Sirius XM Bluetooth		•
Communication radio ready - FM		•
12V power outlet and 5V USB port	•	
Heat/air conditioning	•	
Storage areas throughout cab	•	
Grab handle on dash	•	
Lights – 4 halogen	•	
Lights – 8 LED		•
Lights – 2 LED front/bottom of cab, access light		•
LED flashing beacon		•
CAT TECHNOLOGY	STANDARD	OPTIONAL
Slope Indicate	•	
Product Link – cellular	•	
Product Link – dual cellular/satellite		•
Remote flash/troubleshoot	•	
Operator ID	•	
Machine security – passcode	•	
Machine security – Bluetooth		•

BUCKETS	STANDARD	OPTIONAL
Pin-on coupler	•	
Fusion quick coupler		•
General Purpose bucket		•
Multi-purpose bucket		•
Performance bucket		•
Landfill bucket		•
UNDERCARRIAGE	STANDARD	OPTIONAL
Caterpillar Heavy Duty undercarriage	•	
Cat Abrasion undercarriage		•
Oscillating track roller frames	•	
Waste or Wide Gauge undercarriage		•
SERVICE AND MAINTENANCE	STANDARD	OPTIONAL
Hinged radiator guard and swing out fan	•	
Ecology drains	•	
High-speed oil change		•
4 x 2 Easy tie-down points on chassis	•	
Shovel holder	•	
Ground-level service center	•	
Hydraulic tilt cab		•
Fast fuel fill		•
Refueling pump		•
Hydraulic demand fan	•	
Hydraulic demand fan, reversing		•
Underhood work light		•
ATTACHMENTS	STANDARD	OPTIONAL
Ripper-ready rear hydraulics		•
Multi-shank ripper		•
Bumper		•
Counterweights		•
Ripper hitch		•
Striker bar box		•

**Not all features are available in all regions. Please check with your local Cat dealer for specific offering availability in your area.**  
For additional information, refer to the Technical Specifications brochures available at [www.cat.com](http://www.cat.com) or your Cat dealer.

For more complete information on Cat products, dealer services, and industry solutions, visit us on the web at [www.cat.com](http://www.cat.com).

VisionLink is a trademark of Trimble Navigation Limited, registered in the United States and in other countries.

Materials and specifications are subject to change without notice. Featured machines in photos may include additional equipment. See your Cat dealer for available options.

©2021 Caterpillar. All Rights Reserved. CAT, CATERPILLAR, LET'S DO THE WORK, their respective logos, Product Link, Fusion, "Caterpillar Corporate Yellow", the "Power Edge" and Cat "Modern Hex" trade dress as well as corporate and product identity used herein, are trademarks of Caterpillar and may not be used without permission.

[www.cat.com](http://www.cat.com) [www.caterpillar.com](http://www.caterpillar.com)

AEXQ2993-01  
Build Number: 12A  
(Aus-NZ, Eur, Japan,  
Korea, N Am)

